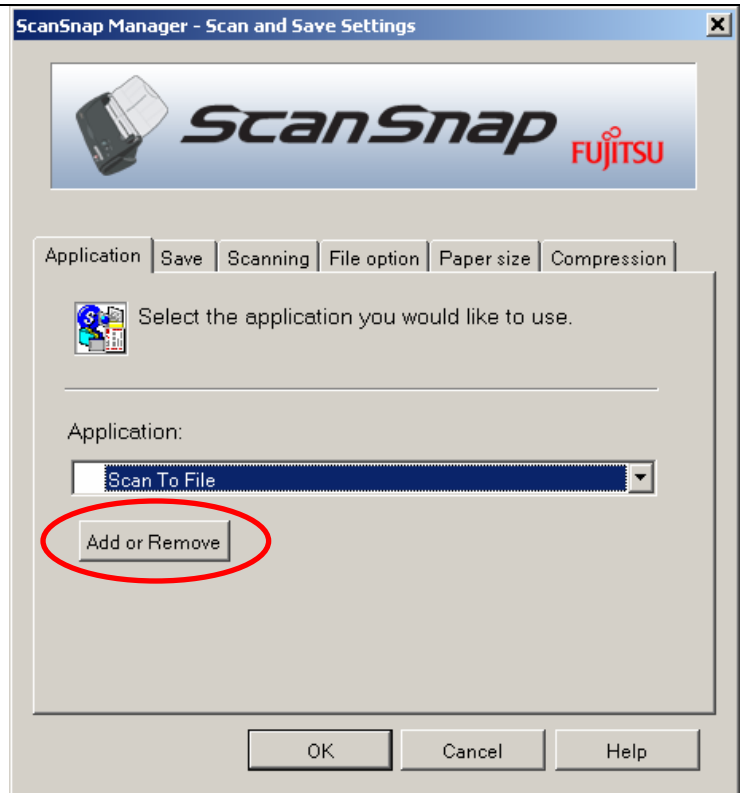


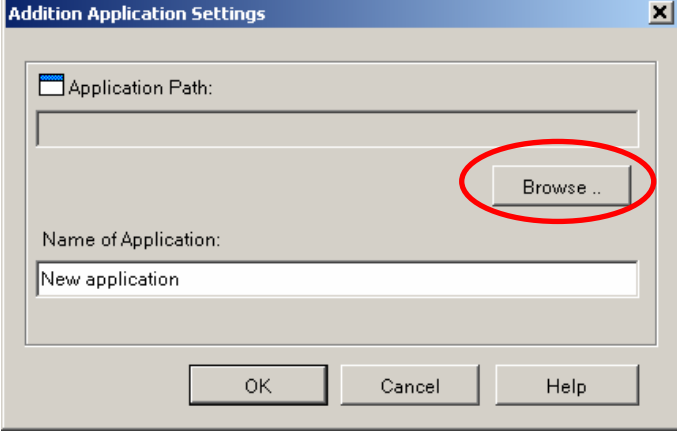
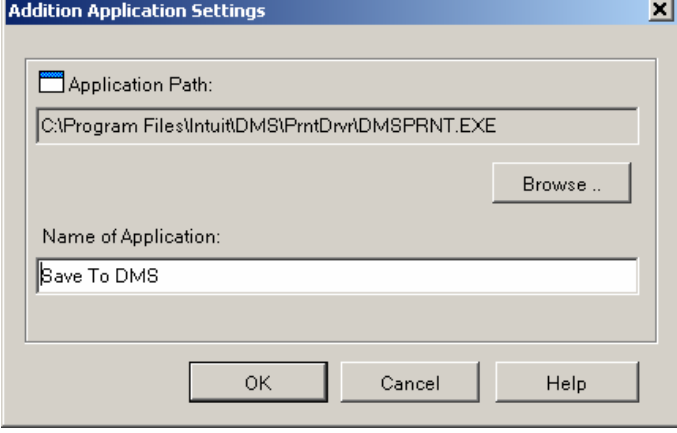
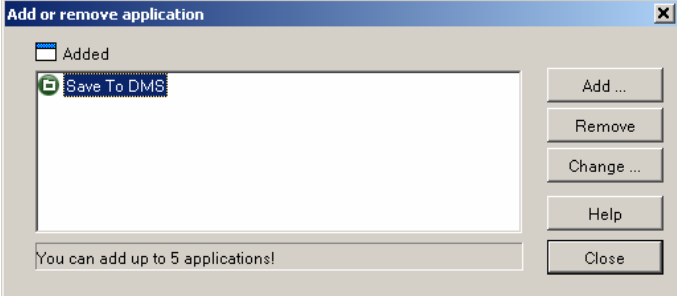
Setting up the ScanSnap to save to DMS

1. Right-click the ScanSnap icon in the system tray and click Settings...

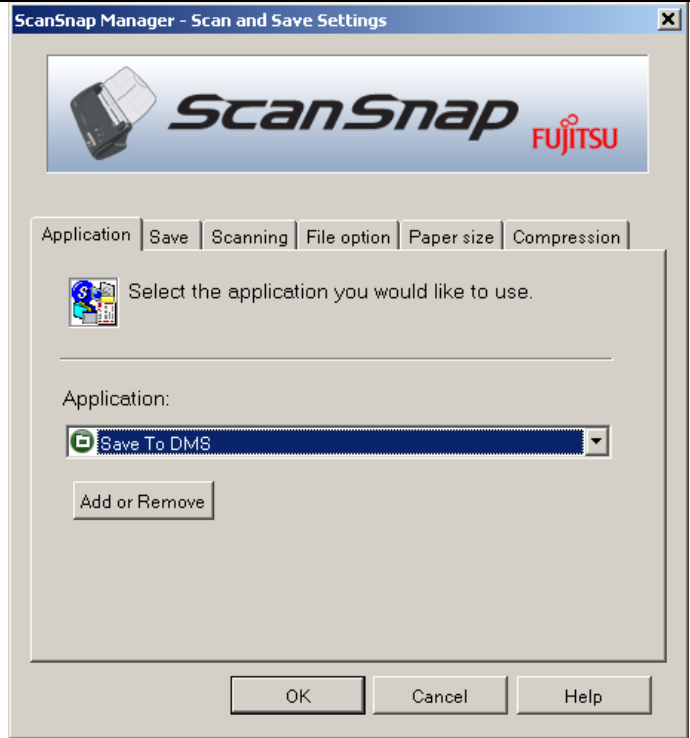


2. Click Add or Remove on the Application Tab



<p>3. Click Browse in the dialog and find the DMSPrnt.exe application.</p> <p>It should be in the C:\Program Files\Intuit\DMS\PrntDrvr\ folder</p>	 <p>The screenshot shows the 'Addition Application Settings' dialog box. It has a title bar with a close button. Below the title bar, there is a section for 'Application Path' with an empty text box and a 'Browse ..' button circled in red. Below that is a 'Name of Application' section with a text box containing 'New application'. At the bottom, there are three buttons: 'OK', 'Cancel', and 'Help'.</p>
<p>4. Type "Save to DMS" in the Name of Application box and click OK.</p>	 <p>The screenshot shows the 'Addition Application Settings' dialog box. The 'Application Path' field now contains the text 'C:\Program Files\Intuit\DMS\PrntDrvr\DMSPRNT.EXE'. The 'Name of Application' field contains 'Save To DMS'. The 'Browse ..' button is still present. The 'OK', 'Cancel', and 'Help' buttons are at the bottom.</p>
<p>5. Make sure "Save to DMS" appears in Added box and click Close.</p>	 <p>The screenshot shows the 'Add or remove application' dialog box. It has a title bar with a close button. Below the title bar, there is a section for 'Added' with a list box containing 'Save To DMS'. To the right of the list box are four buttons: 'Add ...', 'Remove', 'Change ...', and 'Help'. At the bottom, there is a 'Close' button and a message that says 'You can add up to 5 applications!'.</p>

6. Select "Save to DMS" in the application list and click **OK**.



Now the "Save To Folder" dialog from DMS will appear when scanning with the ScanSnap.

